

EDMcatalog™

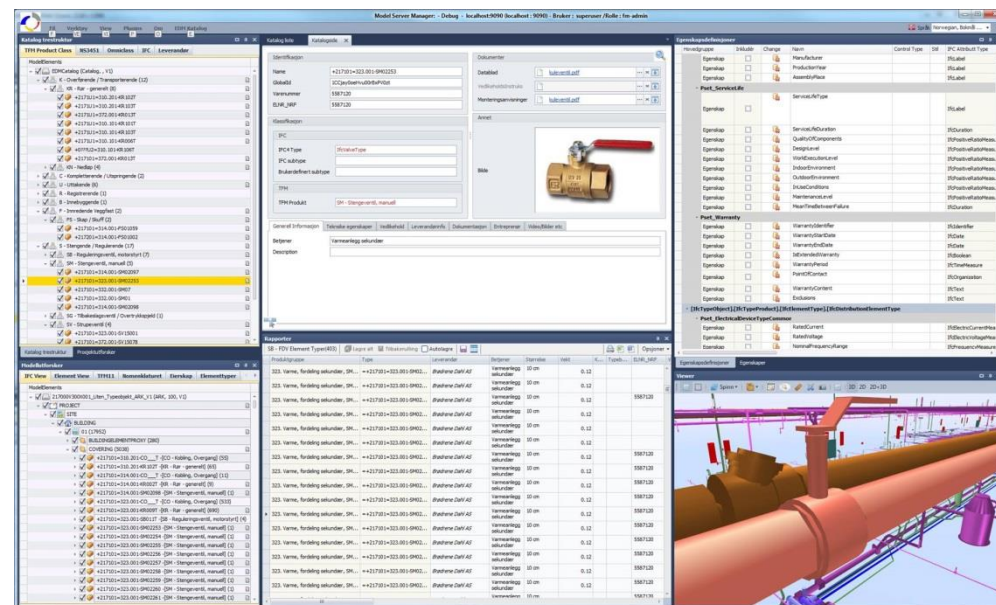
EDMcatalog™ Is an integral part of **EDMmodelServer™** to maintain a central registry for all suppliers, all systems and products used in multiple constructions. Systems and products are classified according to multiple classification standards such as GTIN, SGTIN, TFM, Cobie, etc. The catalog is configurable and is used as the bridge to design, acquire, build and operate on the same thing. The catalog contains both generic objects used for documenting requirements as well as installed objects which is built & maintained..

Utilize Your BIM through all phases of the building life

Benefits:

- Uses IFC4 for standardized support of classification standards including bsDD
- Configurable – all properties may be specified according to the BIM manual and grouped according to LoD and importance (exchange requirements)
- One system for all suppliers, all building systems, all utility systems and associated products
- The catalog keeps track of all occurrences. Hence updates of documentation is efficient and transparent.
- Collects both structured and unstructured data, documents, drawing in one database – to ensure information ownership and long term archiving (no broken links...)

- Enrich Your models using catalog data
 - Type objects representing commercially available off the shelf products.
 - Type objects representing commonly used systems
 - IFC4
- Documentation available on the type objects
 - Easily maintain documentation for catalog objects and systems.
 - No duplicates on instance level



EBIM – catalog data

integrated with **EDMmodelServer™**

Jotne EPM Technology AS

P.O.Box 6629 Etterstad, N-0607 Oslo, Norway

Tel.: +47 23 17 17 00 Fax: +47 23 17 01

jit@jotne.com <http://www.jotneit.no/built-environment>